

Construction HOIST (ZENO)

ZENO

1. ZENO HOIST



PASSENGER & MATERIAL HOIST

ZH – 2032/FC

● Technical Data

MODEL		ZH-2032S/FC	ZH-2032T/FC
Capacity	Rated Load	2000 Kg	2000Kg + 2000Kg
	Speed	0~ 65 m/min	
	Max. Height	450 m	
	Safety Device	SAJ 40	
	Tie-in Distance	1st 6m, 9m	
Car Length	Internal W x L	1.5 x 3.2 m	
	Internal H	2.25 m	
Mast	Size	0.65 x 0.65 x 1.508 m	
	Rack Module	M 8 , Z60	
Electrical Data	Power Supply	380V /440V x 50Hz x 3Φ	
	Fuse Capacity	133 A	
	Motor	3 x 15 Kw	2 - 3 x 15 Kw
	Motor Control	VVFC	
	Cable	16 SQ x 4C	
Weight Table	Base Unit	580 kg	680 kg
	Mast With Rack	125 kg	150 kg
	Cage Assembly	1800 kg	

1. HOIST CAGE



* Cage - GI (Galvanized) Plate, * Cage Door – Aluminum plate

2. HOIST Mast (Galvanized)



All Mast & Rack Gear ZINC GALVANIZED

2. HOIST Mast (Galvanized)



All Mast & Rack Gear- ZINC GALVANIZED

3. Easy Repair

- * Just change the GI Plate
- * Easy to Repair the Cage
- * All connection method _ Bolting

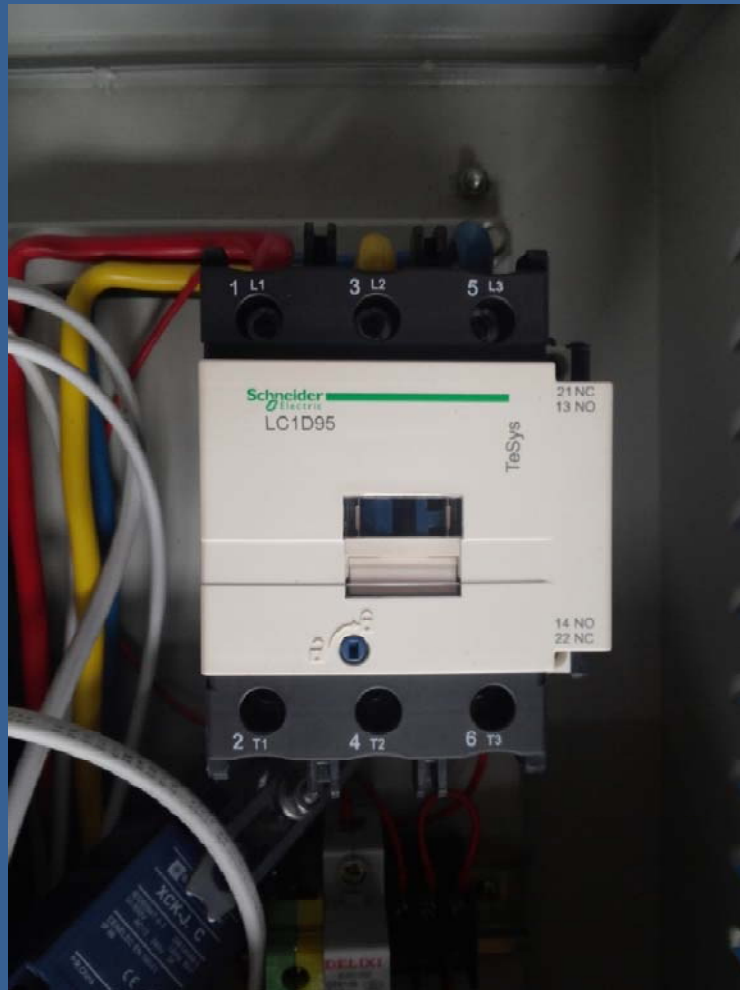


4. Invertor (Schneider)



Invertor frequency using Schneider 55kw (Germany Brand)

5. Electric Panel (Schneider)



Almost Electric Parts using the Schneider (Germany Brand)

6. HOIST in Site



6. HOIST in Site



7. PAINTING PROCESS

1) Painting Process

- ✓ Sanding or Shot Blasting (Very Important)
- ✓ Primer (Important)
- ✓ 1st Finish Coat
- ✓ 2nd Finish Coat

2) Check Point

- ✓ Paint Specification
- ✓ Temperature (18°C, at least 5°C)

7-1. Sanding or Shot Blasting



7-2. Primer



7-3. Finish Coat



8. Parts Specification

HOIST Manufacture	ITEM	ZENO HOIST (TWIN Type)				
		SPEC	Q'TY	Unit (Twin)	Brand	REMARKS
ZENO	Hoist Specification	Model : ZH-2032T, Capacity: 2000kg, Speed :65m/min				
	Drive Units (Mortor & Brake & Reducer)	15KW	3	2	Zhangjiang	China brand
	Safty Device (Gavarnor)	40KN	1	2	SAJ40	China brand
	INVERTOR (frequency)	55KW	1	2	Schneider	Germany brand
	MAIN PANEL	Electric parts	1	2	Schneider	Germany brand
	MAST	650x 650x1508 (4.5t)	100	1	ZENO	Zinc galvanized (All)
	RACK GEAR	60x40x1508, M8	100	2		Zinc galvanized (All)