

CMA^X

CATALOGUE
OF
TOWER CRANE PARTS



CNBM

CNBM INTERNATIONAL CORPORATION

CNBM International Corporation, as a leading subsidiary of CNBM Group, enjoys competitive advantages in importing and exporting of building materials as well as complete sets of machinery and equipments, engineering, and project contracting.

With rapid development, CNBM International Corporation has grown to a key master in providing construction machinery like tower crane, building hoist, suspended platform, concrete formwork, etc; road machinery like bulldozer, paver, backhoe loader & concrete pump spare parts; packing machinery like cement paper bag machinery, shopping paper bag machinery and industrial related machines; we are also one of the biggest overseas dealers of silicon steel of TISCO. After years of successful experience, CNBM has proved himself a leader in innovation, design, engineering, construction, commissioning and technical services.

Tower crane parts is one of our key products, and with the experiences of exclusively-producing mast sections for over 15 years, we are now providing the world with high quality tower crane parts, including different types of mast section, anchorage collar and base frame for famous brand tower cranes:

For Potain

S24C mast section

J4/J5/J17 mast section

L44A1 for FO23C, MC115B general mast section

L46A1 for FO23C, MC110, 170, 175B general mast section, MC115B reinforced mast section

L66A1 for FO/23B general mast

L66A2 for MC230, MC200

L68A1 for FO23B

L68B1 for H3/36B, C7030

L68B2 for MC320, 300, 230 and MD265, 235

Anchorage collar 1. 6m / Anchorage collar 2. 0m

Base frame D50 for 1. 6m tower crane

Base frame D65 for 2. 0m tower crane

Other parts like base section, base leg, lifting jib, trolley, hook, climbing cage and mechanisms for lifting, slewing, trolleying and travelling.

For Liebherr

88HC / 90HC / 120HC / 132HC / 154HC mast section

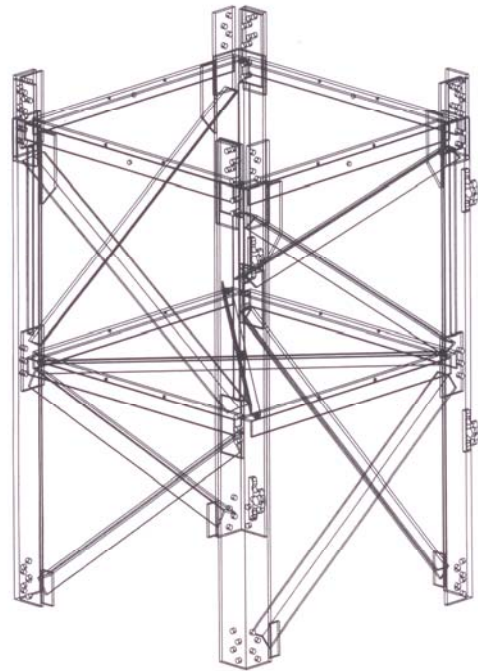
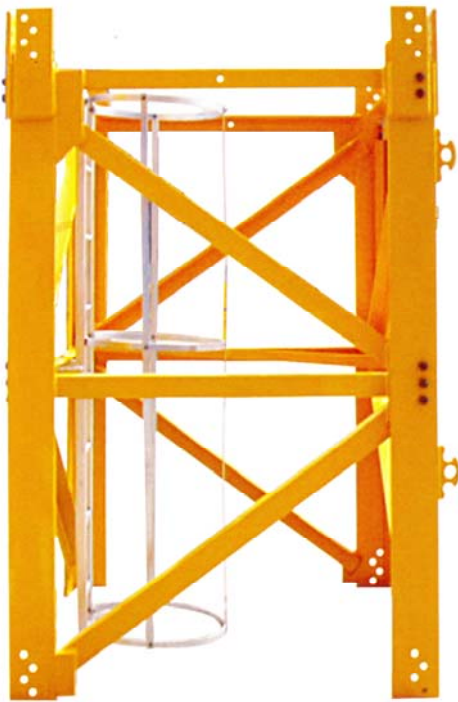
120HC reinforced mast section

170HC mast section

200HC / 256HC / 290HC mast section

Other parts like base section, base leg, lifting jib, trolley, hook, climbing cage and mechanisms for lifting, slewing, trolleying and travelling.

J4/J5/J17 MAST SECTION



DIMENSION OF J5

(WITH CONNECTING PANEL): 1600MM X 1600MM X 2500MM

(WITHOUT CONNECTING PANEL): 1600MM X 1600MM X 2300MM

WEIGHT: 900KG (+/- 10KG)

EQUIPPED WITH THE FIXING BOLTS AND INSIDE LADDER

L44A1 MAST SECTION

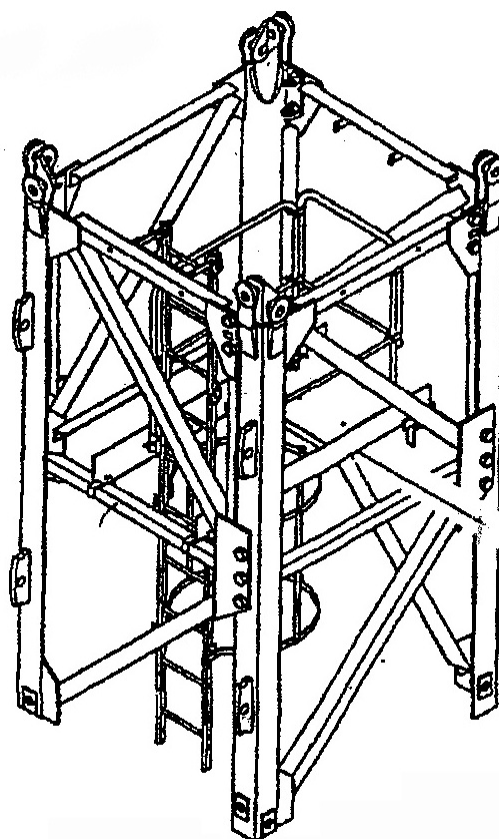


DIMENSION: 1600MM X 1600MM X 3000MM

WEIGHT: 1100KG (+/-10KG)

EQUIPPED WITH THE FIXING BOLTS, PINS, INSIDE LADDER AND RESTING PLATFORM (3 MAST SECTIONS WITH 1 RESTING PLATFORM)

L46A1 MAST SECTION



DIMENSION: 1600MM X 1600MM X 3000MM

WEIGHT: 1180KG (+/-10KG)

EQUIPPED WITH THE FIXING BOLTS, PINS, INSIDE LADDER AND RESTING PLATFORM (3 MAST SECTIONS WITH 1 RESTING PLATFORM)

L46C / L46F MAST SECTION FOR INTERNAL CLIMBING FRAME MODE



L46D MAST SECTION



DIMENSION: 1600MM X 1600MM X 3000MM

WEIGHT: 1200KG (+/-10KG)

**EQUIPPED WITH THE FIXING BOLTS, PINS, INSIDE LADDER AND RESTING
PLAFORM (3 MAST SECTIONS WITH 1 RESTING PLATFORM)**

L66A2 MAST SECTION



DIMENSION: 2000MM X 2000MM X 3000MM

WEIGHT: 1480KG (+/-10KG)

EQUIPPED WITH THE FIXING BOLTS, PINS, INSIDE LADDER AND RESTING PLATFORM (3 MAST SECTIONS WITH 1 RESTING PLATFORM)

L68A1 MAST SECTION



DIMENSION: 2000MM X 2000MM X 3000MM

WEIGHT: 1450KG (+/-10KG)

EQUIPPED WITH THE FIXING BOLTS, PINS, INSIDE LADDER AND RESTING PLATFORM (3 MAST SECTIONS WITH 1 RESTING PLATFORM)

L68B1 MAST SECTION

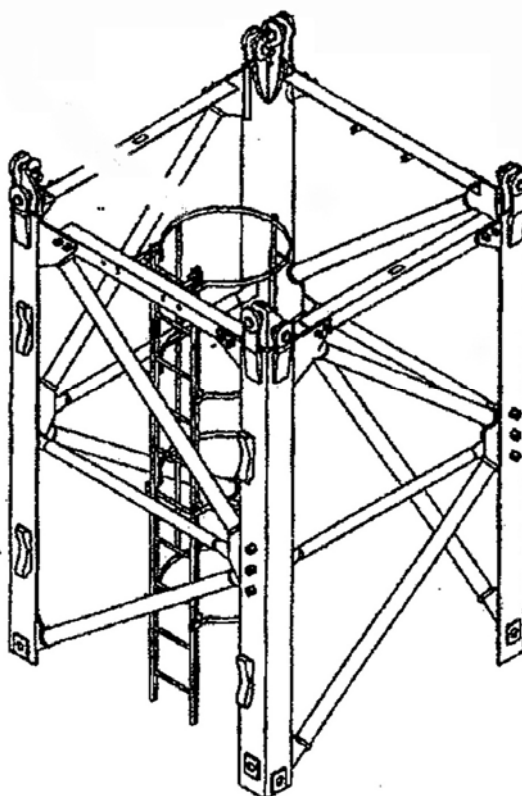


DIMENSION: 2000MM X 2000MM X 3000MM

WEIGHT: 1730KG

EQUIPPED WITH THE FIXING BOLTS, PINS, INSIDE LADDER AND RESTING PLATFORM (3 MAST SECTIONS WITH 1 RESTING PLATFORM)

L68B2 MAST SECTION



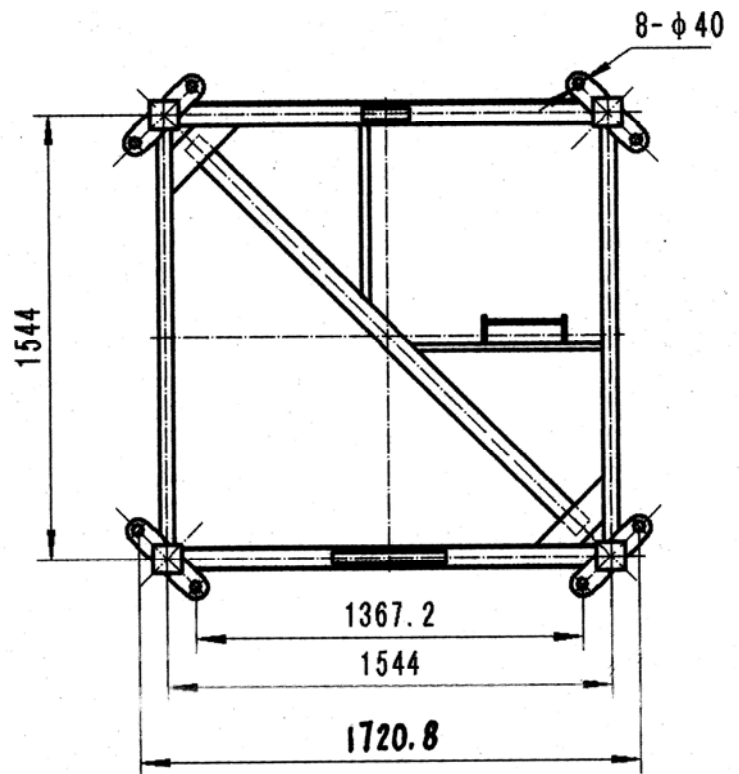
DIMENSION: 2000MM X 2000MM X 3000MM

WEIGHT: 1750KG

**EQUIPPED WITH THE FIXING BOLTS, PINS, INSIDE LADDER AND RESTING
PLATFORM (3 MAST SECTIONS WITH 1 RESTING PLATFORM)**

FOR LIEBHERR TOWER CRANE

132HC MAST SECTION

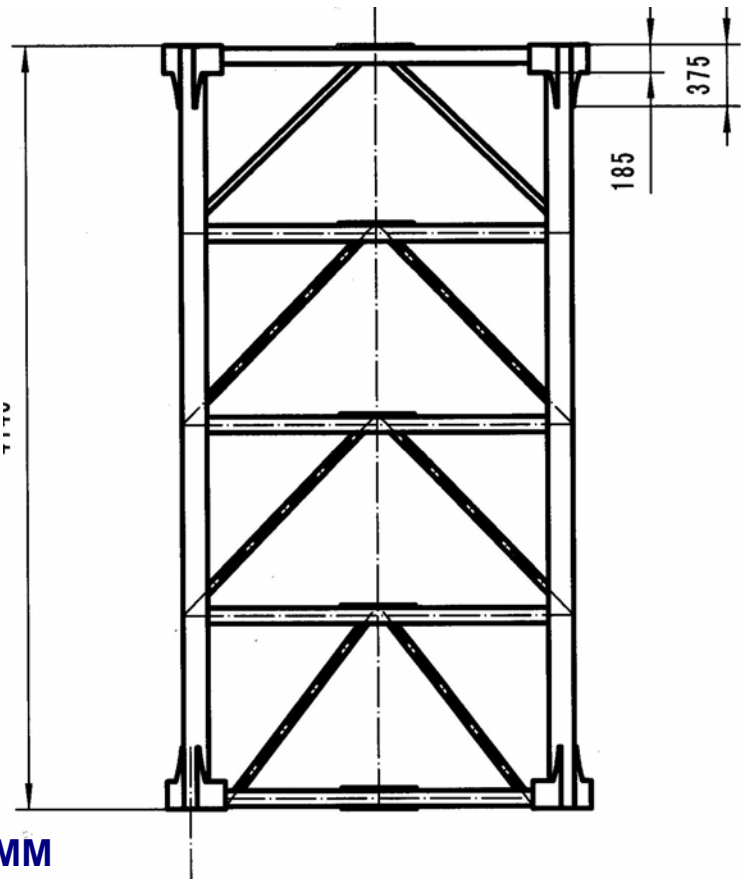
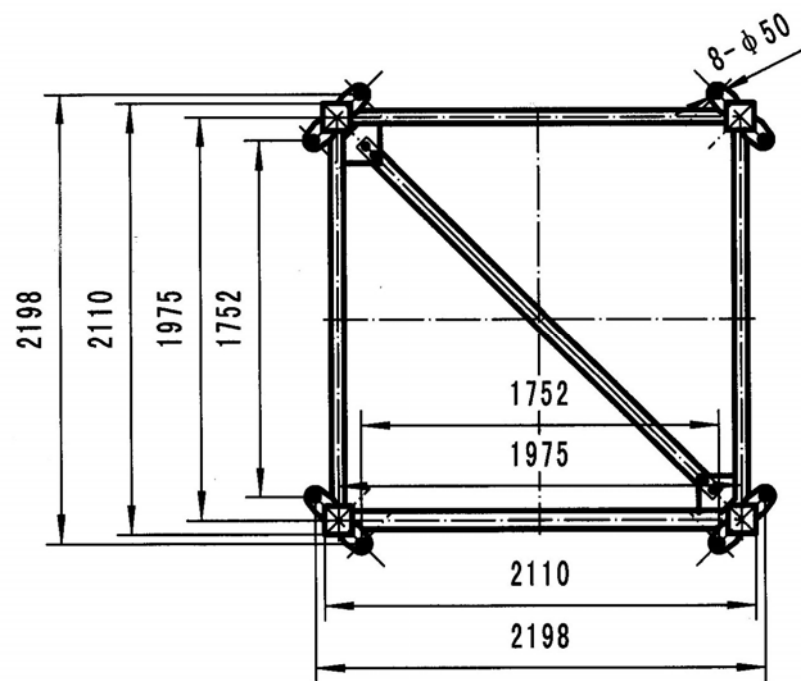


DIMENSION: 1800MM X 1800MM X 2500MM

WEIGHT: 1050KG (+/- 10KG)

EQUIPPED WITH THE FIXING BOLTS, INSIDE LADDER AND RESTING PLATFORM

256HC MAST SECTION



DIMENSION: 2300MM X 2300MM X 4140MM

WEIGHT: 2240KG (+/- 10KG)

EQUIPPED WITH THE FIXING BOLTS, INSIDE LADDER AND RESTING PLATFORM

1.6M / 2.0M "V" MODE BALLAST BASE FRAME FOR POTAIN TOWER CRANE



BALLAST BASE SECTION FOR POTAIN TOWER CRANE



1.6M / 2.0M CLIMBING CAGE FOR POTAIN TOWER CRANE



BASE LEG



ANCHORAGE

ANCHORAGE FRAME FOR POTAIN TOWER CRANE



ANCHORAGE FRAME FOR LIEBHERR TOWER CRANE



OTHER TOWER CRANE PARTS

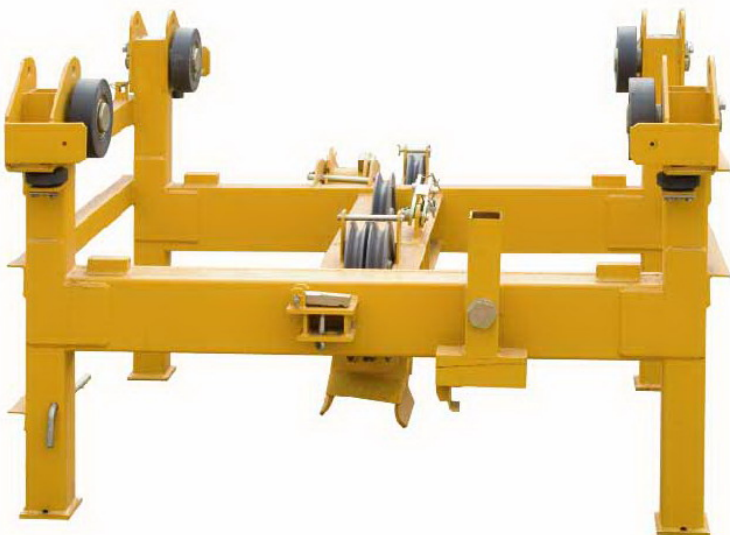
CLIMBING YOKE



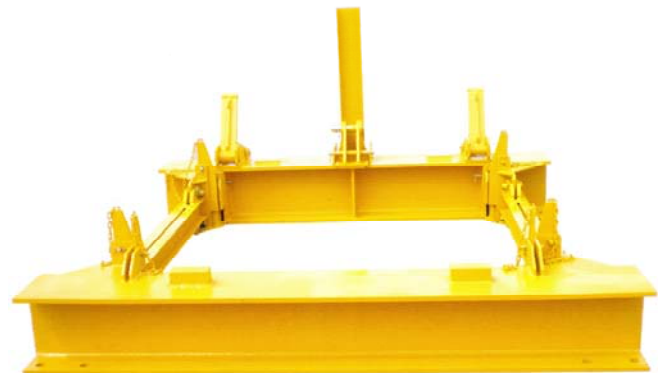
LIFTING HOOK



TROLLEY



1.6M MODE INTERNAL CLIMBING FRAME



PINS & SHAFT

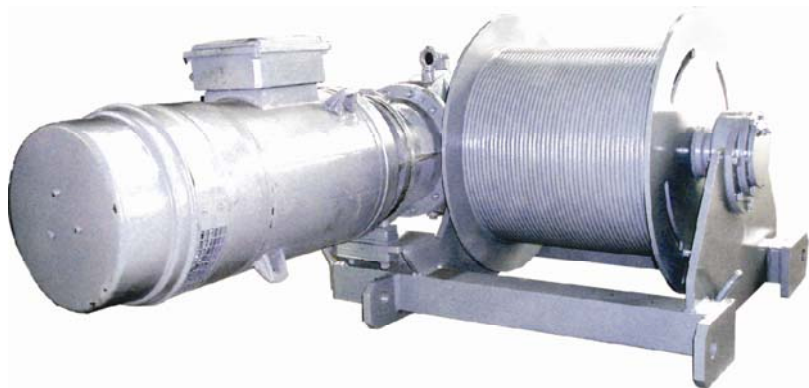


CONNECTING BOLTS FOR LIEBHERR TOWER CRANE



MECHANISMS (SAME SUPPLIER WITH POTAIN)

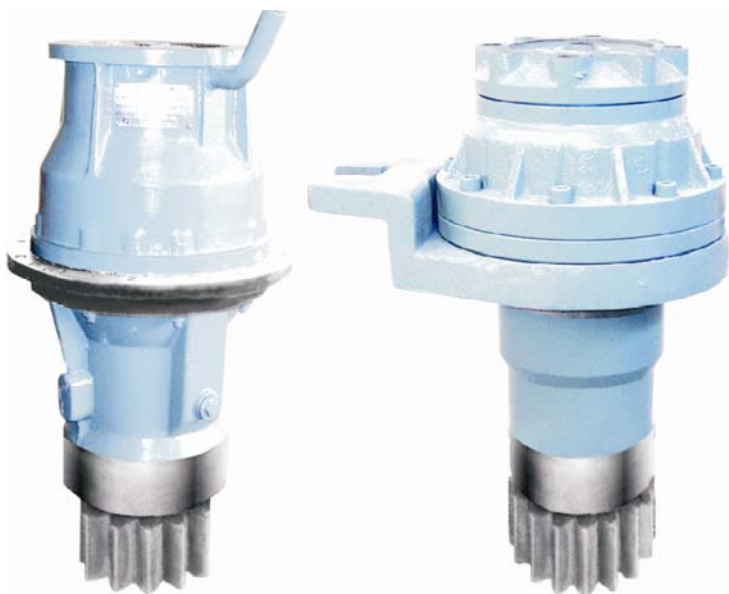
HOISTING MECHANISM



TROLLEYING MECHANISM



SLEWING MECHANISM



TRAVELLING MECHANISM



LOADING PICTURES

POTAIN MAST SECTION IN CONTAINER



LIEBHERR MAST SECTION IN CONTAINER



OUR RICH EXPORTING EXPERIENCES ENSURE GOOD SHIPMENT FOR YOU!

REFERENCE INFORMATION

- ALL THE TOWER CRANE PARTS ARE MANUFACTURED WITH HIGH STRENGTH STEEL, STEEL NO. Q345B (CHINESE STANDARD), WHICH IS EQUAL TO ST52 (GERMAN STANDARD).

THE DETAILED INFORMATION ARE AS BELOW

Q345B Chemical Properties				
C	Mn	Si	P	S
≤0.20%	1.00~1.70	≤0.55%	≤0.040%	≤0.040%

Q345B Physical Properties					
Yield limit		Tensile strength	Tensile rate	Bending test	
≤16mm	> 16~35mm	470~630 Mpa	≥20%	≤16mm	> 16~100mm
≥345 Mpa	≥325 Mpa			d=2a	D=3a

- RUST-REMOVING METHOD: BALL BLASTING
- PAINT: HIGH QUALITY EPOXY PAINT
- LADDERS AND PLATFORMS ARE OF DIP-GALVANIZED PARTS
- HIGH QUALITY OF WELDING

