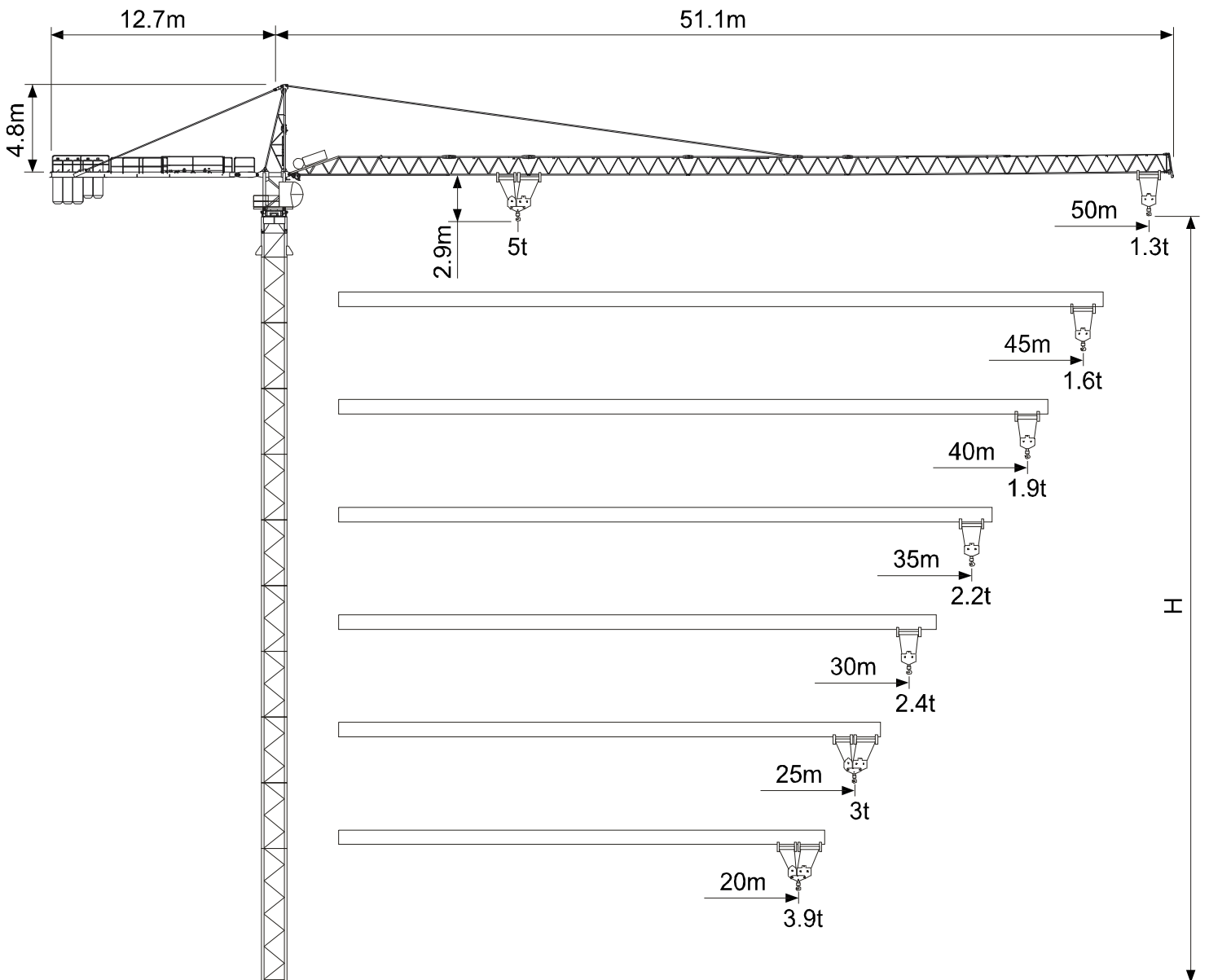




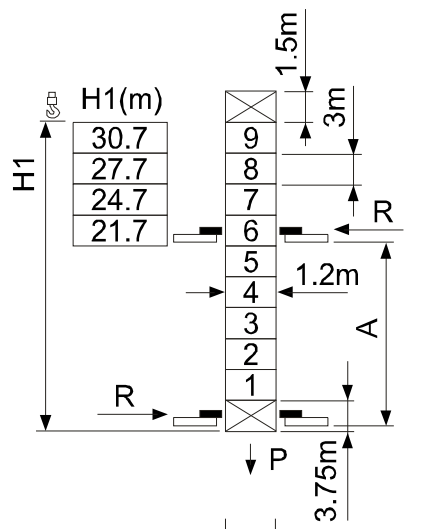
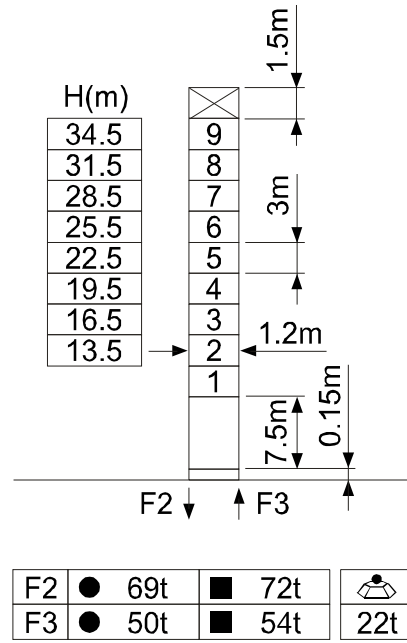
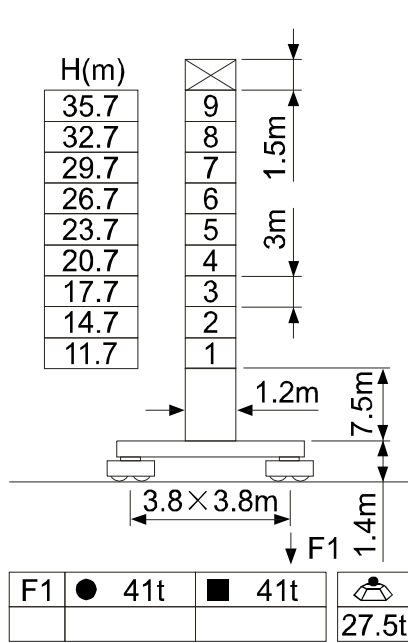
# JT80 F5



# JT80 F5

## 塔身 Masts

S24



※ 请联系我们 Please consult us.

● 工作状态 In service    F 反力 Reactions    ■ 非工作状态 Out of service    ⚖ 自重 Without load and ballast with longest jib and maximum height

## 负荷特性 Load diagrams

<b>50m</b>	m 3.2▶	15	17	20	22	25	26.7	28.9	30	32	35	37	40	42	45	47	50
	t II	2.5	2.5	2.5	2.5	2.5	2.5	2.5	2.4	2.2	2	1.9	1.7	1.6	1.5	1.4	1.3
	t IV	5	4.3	3.6	3.2	2.7	2.5	2.25	2.15	1.95	1.75	1.65	1.45	1.35	1.25	1.15	1.05

<b>45m</b>	m 3.2▶	16	17	20	22	25	27	28.4	30.8	32	35	37	40	42	45
	t II	2.5	2.5	2.5	2.5	2.5	2.5	2.5	2.5	2.4	2.2	2	1.85	1.75	1.6
	t IV	5	4.6	3.8	3.4	2.9	2.65	2.5	2.25	2.15	1.95	1.75	1.6	1.5	1.35

<b>40m</b>	m 3.2▶	16.4	17	20	22	25	27	29.1	31.6	32	35	37	40
	t II	2.5	2.5	2.5	2.5	2.5	2.5	2.5	2.5	2.45	2.2	2.1	1.9
	t IV	5	4.8	3.9	3.5	3	2.75	2.5	2.25	2.2	1.95	1.85	1.65

<b>35m</b>	m 3.2▶	16.4	17	20	22	25	27	29.1	31.6	32	35
	t II	2.5	2.5	2.5	2.5	2.5	2.5	2.5	2.5	2.45	2.2
	t IV	5	4.8	3.9	3.5	3	2.75	2.5	2.25	2.2	1.95

<b>30m</b>	m 3.2▶	16.3	17	20	22	25	27	30
	t II	2.5	2.5	2.5	2.5	2.5	2.5	2.4
	t IV	5	4.8	3.9	3.5	3	2.75	2.15

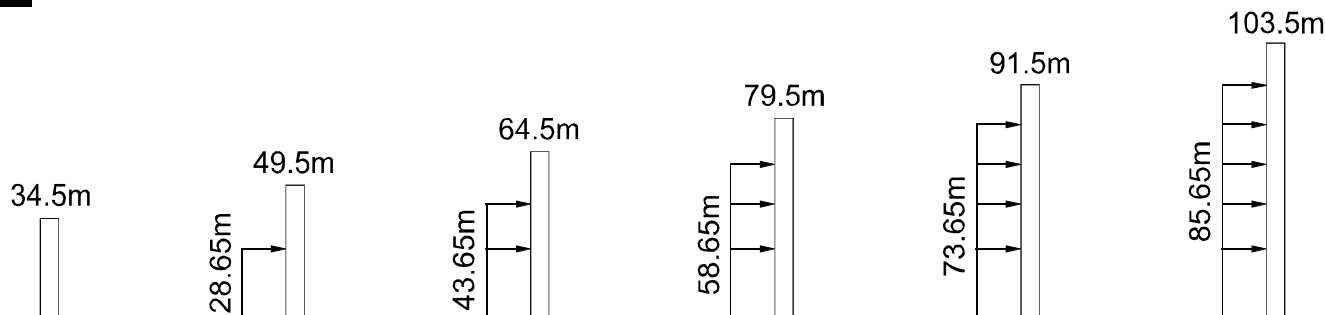
<b>25m</b>	m 3.2▶	16.3	17	20	22	25
	t II	2.5	2.5	2.5	2.5	2.5
	t IV	5	4.8	3.9	3.5	3

<b>20m</b>	m 3.2▶	16.3	17	20
	t II	2.5	2.5	2.5
	t IV	5	4.8	3.9

# JT80 F5

## 附着 Anchorages

S24



>103.5m 请联系我们 Please consult us.

## 机构 Mechanisms

			m/min	t	kW	绕绳量 Rope length
△ 起升 Hoisting	25PC13A		6.9	2.6	18.5/18.5 /3.3kW	360m >360m※
			34.5	2.6		
			69	1.3		
			3.4	5.2		
			17	5.2		
			34	2.6		
	25LVF13		4.5	2.6	18.5kW	360m >360m※
			23	2.6		
			38	2.6		
			46	1.95		
			76.5	0.85		
				2.75		
11.5	5.2					
19	5.2					
23	3.9					
38.25	1.7					

△ 变幅 Trolleying	4 D3 V2	15~58m/min	3kW
回转 Slewing	RCV95	0~0.8r/min	95Nm
行走 Traveling	RT224	25m/min	2×2.9kW

380V(±5%) 50Hz	25PC13A:35kVA
----------------	---------------

※ 请联系我们 Please consult us.

△ 可选 Option